

INTRODUCTION



p.xi (B)



p.xii (CDR)



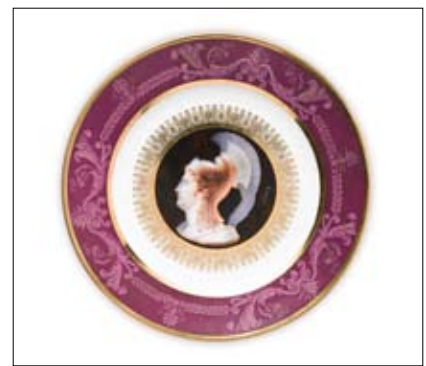
p.xv (R)



p.xvi (R)



p.xvii (MI)



p.xix (PC)



p.xxi royalcollectionshop.co.uk



p.xxii (MV)



p.xxii (MV)



p.xxii (MV)



p.xxiii (MV)



p.xxiii (MV)



p.xxiii (MV)

Source CODE:

- (A)** Anthropologie:
anthropologie.com
- (B)** Bardith, Ltd.:
bardith.com
- (CA)** Childhood Antiques:
childhoodantiques.com
- (CDR)** Country Dining Room Antiques:
countrydiningroomantiq.com
- (CH)** The Shop at Cooper-Hewitt:
cooperhewittshop.org
- (EA)** Elise Abrams Fine Antiques for Dining:
eliseabrams.com
- (FE)** Fishs Eddy:
fishseddy.com
- (JS)** Just Scandinavian:
justscandinavian.com
- (K)** Kneen & Co.:
kneenandco.com
- (LT)** La Terrine:
laterrinedirect.com
- (LTT)** Let's Talk Turkey Vintage Tabletop
rubylane.com/shop/letstalkturkey
- (MI)** Mood Indigo:
moodindigonewyork.com
- (MoMA)** MoMA Design Store:
momastore.org
- (Moss)** Moss:
mossonline.com
- (MV)** Mount Vernon Gift Shop:
mountvernon.org/store
- (PB)** Pottery Barn:
potterybarn.com
- (PC)** Private Collection
- (R)** Replacements, Ltd.:
replacements.com
- (T)** Treillage:
treillageonline.com
- (WS)** Williams-Sonoma:
williams-sonoma.com